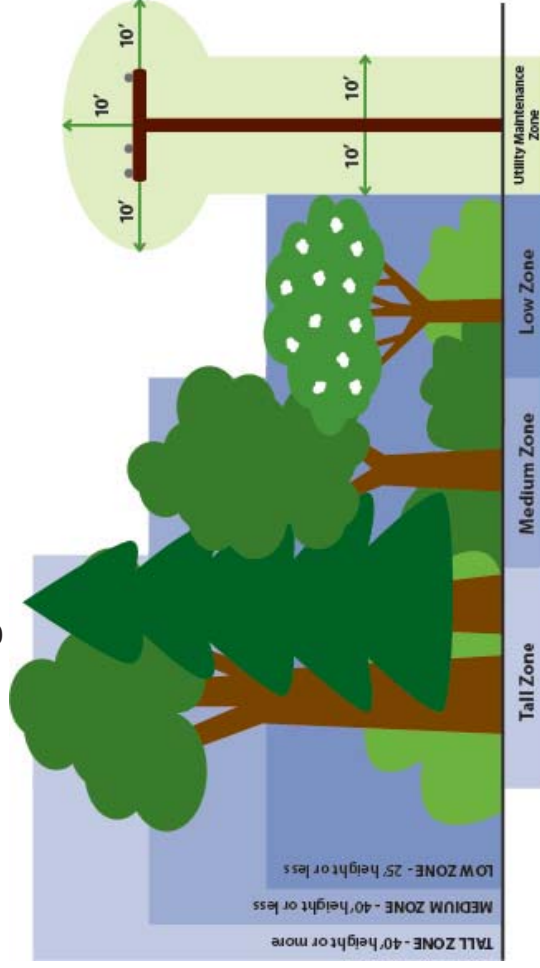


Important Planting Information

KUB will mail plastic stakes to you between November and March so you may mark where you want your tree planted. All trees must be planted a minimum of 10 feet away from electric distribution lines and 25 feet away from transmission lines.

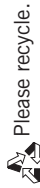
If you place a plastic stake in a location that conflicts with overhead or underground utilities or other physical barriers, we will try to contact you at the telephone number you list on the request form. If we cannot reach you, our planting contractor will adjust the location to meet tree planting guidelines.

Planting Near Distribution Lines



524-2911 www.kub.org

Customers who are eligible for a replacement tree may choose to donate the tree to a public location. If you live in Knoxville or Knox County, you can pick a local park and we will work with the appropriate departments to identify a planting site and appropriate tree for the location. Outside Knox County, KUB will work with you to identify potential public sites. Written consent from property owners must be given to a KUB forester before a tree will be planted.



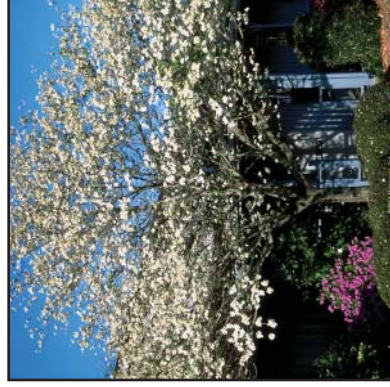
VMTRY13M12

Tree Planting Program



This brochure can help you select a replacement tree or shrub. You may choose any tree or shrub pictured in this brochure.

If you have any questions or comments, please contact KUB Vegetation Management at 865-558-6658.



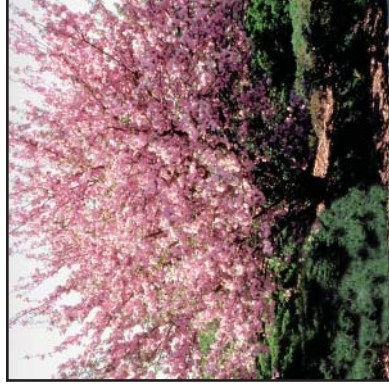
White Dogwood: 25' mature height, deciduous, full shade to full sun, white spring blooms, green leaves. Planting size 6' to 7'.



Pink Dogwood: 25' mature height, deciduous, full shade to full sun, pink spring blooms, green leaves. Planting size 6' to 7'.



Eastern Redbud: 25' mature height, deciduous, partial shade to full sun, rosy pink spring blooms, green leaves. Planting size 6' to 7'.



Kwanzan Cherry: 15' to 25' mature height, deciduous, full sun, pink spring blooms, green leaves. Planting size 6' to 7'.



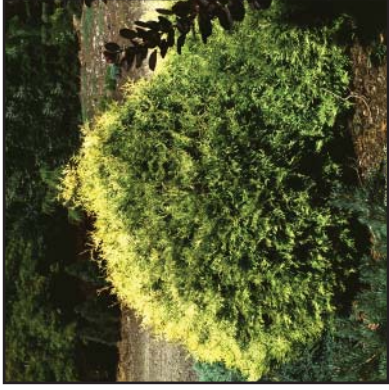
White Flowering Crabapple: 15' to 20' mature height, deciduous, full sun, fragrant white spring blooms, green leaves. Planting size 6' to 7'.



Red Flowering Crabapple: 15' to 20' mature height, deciduous, full sun, fragrant red spring blooms, green leaves. Planting size 6' to 7'.



Fragrant Lilac: 8' to 15' mature height, deciduous hardy shrub, partial shade to full sun, light purple spring flowers. Planting size 3 gallon.



Golden Globe Arborvitae: 2' to 3' mature height, evergreen shrub, partial to full sun, golden yellow foliage. Planting size 5 gallon.



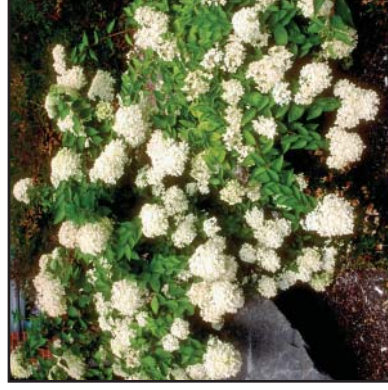
Crape Myrtle: 15' to 20' in height, deciduous, full sun, pink or red spring blooms, green leaves. Planting size 4/7 gallon.



Purpleleaf Plum: 15' to 25' mature height, deciduous shrub, full sun, fragrant white and pink spring blooms, purple leaves. Planting size 6' to 7'.



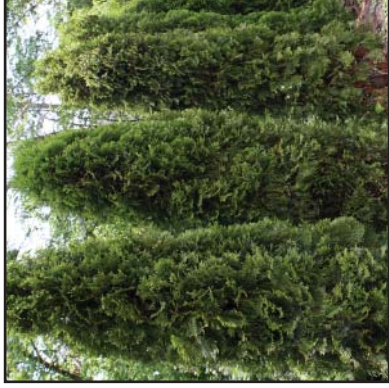
Forsythia*: 8' to 10' mature height, deciduous shrub, partial sun to full sun, yellow spring blooms. Planting size 3 gallon.



Pee Gee Hydrangea*: 10' to 20' mature height, deciduous shrub, partial shade to full sun, white summer flowers. Planting size 3 gallon.



Fosters Holly: 15' to 25' mature height, evergreen, full sun, white spring flowers, deep red berries, glossy, dark green leaves. Planting size 4' to 5'.



Emerald Green Arborvitae: 10' to 15' mature height, evergreen, full sun, shimmering emerald green foliage. Planting size 4' to 5'.

Selecting Your Tree and Where to Plant It

Refer to the tree planting diagram on the back of this brochure to help you determine what replacement tree will best meet your needs. Be sure to mark a location in accordance with the planting guidelines outlined in the diagram. All trees and shrubs offered by KUB are appropriate for planting in the low zone. Encroachment is less likely whenever plantings are placed beyond the minimum 10' of clearance.

*Two replacement shrubs of this variety will be offered for each replacement tree.